



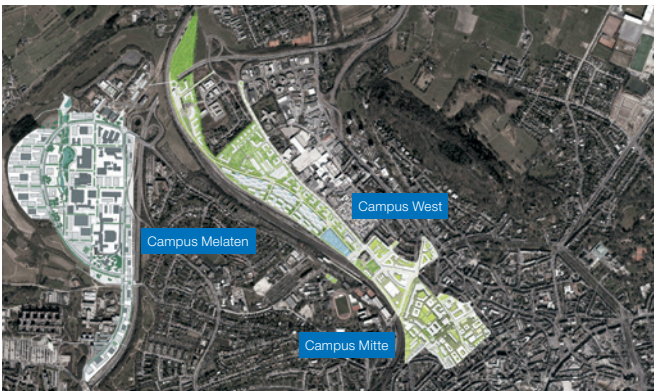
RESEARCH. LEARN.
DEVELOP. LIVE.



RWTH AACHEN CAMPUS – THE CONCEPT

RWTH Aachen University aims to become one of the world's leading technical universities. With the RWTH Aachen Campus, the university is creating a unique portfolio of services for cooperation in specialist clusters in which RWTH Aachen University is providing both know-how and a unique research infrastructure.

This will give national and international companies the opportunity to get involved on the campus with their own research and development resources. Industrial partners are therefore granted access to qualified trainees as well as specialist training and further education programmes. Six clusters are currently being realised on Campus Melaten: Logistics, Production Engineering, Photonics, Bio-Medical Engineering, Heavy-Duty Drives as well as Sustainable Energy.



One of Europe's biggest research landscapes is being built on more than 2.5 sqkm.

800,000 SQM OF SPACE FOR 19 RESEARCH CLUSTERS



Logistics Cluster – 1st phase of construction

MORE THAN 200 COMPANIES ARE ALREADY INVOLVED ON THE RWTH AACHEN CAMPUS

The challenges facing research over the coming years can only be solved by an interdisciplinary approach. Various companies – from SMEs to big corporations – can become actively involved in current and future research topics on the RWTH Aachen Campus through cooperation with university institutes. Common research problems will be dealt with in an integral and interdisciplinary manner in a cluster. Companies will share resources with university institutes, benefit from synergistic effects and swap know-how directly on the spot.

This close cooperation will facilitate coordination processes, increase the speed and quality of research results and help cut research and development costs. Industrial partners can use the research infrastructure and competence of RWTH Aachen University at various levels of intensity – from basic research, the further development of individual technologies, right through to the development of a marketable product.



Production Engineering Cluster – 1st phase
of construction

INVESTORS AND INTERNATIONAL ARCHITECTS ARE PLANNING THE RESEARCH BUILDINGS OF THE FUTURE

Investors from the private sector who erect buildings on the RWTH Aachen Campus have two main motives for their involvement: reliable partners in the RWTH Aachen University and the state of North Rhine-Westphalia (NRW) as well as an investment in an excellent university landscape with good prospects for growth in the future. The university expansion areas are owned by the Bau- und Liegenschaftsbetrieb NRW (building and real estate management authority of the Land of North Rhine-Westphalia), who provides the plots on a hereditary lease. The works concession for a cluster will be awarded within the scope of a Europe-wide tendering procedure via a competition and negotiation procedure.

The following teams of architects and investors have been selected up to now: for the Logistics Cluster, ante4C GmbH (Aachen) with the architect's office Meyer & van Schooten (Amsterdam), for the Production Engineering Cluster, IMMOFINANZ Group (Vienna) with Henn architects (Munich) and for the Photonics Cluster, ante4C GmbH (Aachen) with KPF architects (New York).



Photonics Cluster – 1st phase of construction

LIVING IS AN IMPORTANT ASPECT ON THE RWTH AACHEN CAMPUS

The expansion areas Melaten and West are comparable in size to Aachen city centre. Together with the original Campus Mitte (Campus Central) a coherent campus is being developed that will become part of public life. The RWTH Aachen Campus is therefore very important for Aachen from an urban development point of view too.

Apart from companies, research institutions and university institutes, shops, hotels, restaurants and service facilities are also moving to the campus. In winter 2014, the first bilingual day-care facility for children was completed in the park on the Campus Boulevard. The bistro restaurant Forckenbeck opened on the Campus Melaten in 2012.



First restaurant concept on the Campus Melaten

RWTH AACHEN UNIVERSITY – EXCELLENCE THROUGH ACHIEVEMENT

RWTH Aachen University has held the status of an “Excellent University” since 2007. With over 260 institutes and 480 professorships it is one of Europe’s leading scientific and research institutions. A special feature are the more than 20 major research institutes. Aachen is also home to four Fraunhofer Institutes as well as 16 affiliated institutes.

With more than 350 million euros for research and development from industry and public funds, RWTH Aachen University is once again the No. 1 German university when it comes to third-party funding in 2013.

The RWTH Aachen Campus is an important element for the university to help consolidate its leading national position, establish itself internationally and remain successful in the competition amongst universities.



Campus Mitte (Campus Central)

YOUR PARTNER –
YOUR CONTACT



RWTH Aachen Campus GmbH

Campus-Boulevard 57
52074 Aachen
Phone +49 241 80 27374
Fax +49 241 80 627374
E-Mail info-campus@rwth-aachen.de
Web www.rwth-campus.com



BLB NRW

Bau- und Liegenschaftsbetrieb NRW
Mies-van-der-Rohe-Straße 10
52074 Aachen
Phone +49 241 43510 370
Fax +49 241 43510 198
E-Mail AC.Campus@blb.nrw.de
Web www.blb.nrw.de



Stadt Aachen

Fachbereich Wirtschaftsförderung/
Europäische Angelegenheiten
Johannes-Paul-II.-Straße 1
52062 Aachen
Phone +49 241 432 7610
Fax +49 241 432 7699
E-Mail wifoe@mail.aachen.de
Web www.aachen.de

ILLUSTRATION AND PHOTOGRAPHIE

Thomas Rhiele (Campus Central); KPF (Photonics Cluster); Henn (Production Engineering Cluster); RWTH Aachen Campus GmbH (Logistics Cluster/restaurant concept); StädteRegion Aachen, RKW Rhode Kellermann Wawrowsky, rha reicher haase assoziierte, Machleidt & Partner (graphic Melaten, West, Central); rha reicher haase assoziierte (cover)